



## DATES TO REMEMBER

### May

Fri 8th	Mother's Day Breakfast Mother's Day Stall
Mon 11th	First aid in schools Yr 5/6
Tues 12th	First aid in schools Prep to 4
Wed 13th	Yr 3-6 Carlton FC visit
Mon 18th	Education Week—Open Day
Fri 22nd	Division sports (Yr 5/6)
Wed 27th	Division Cross Country Yr 5/6 Parliament session
Thurs 28th	VSSS Rehearsal @ SEPS

### June

Mon 1st/4th	Book Fair
Wed 3rd	BBQ Lunch order
Thurs 4th	Cultural Performance (All Hands on Ukcs)
Fri 5th	Curriculum Day (student free)
Mon 8th	Kings Birthday public holiday
Wed 10th	Yr 5/6 One Tree Per Child excursion
Fri 26th	End of term 2.30pm finish

## Wednesday 6th May 2026

### **DIRECT BANK DEPOSIT**

**Account Name:** Shepparton East Primary School  
**BSB:** 063—527 **Account number:** 00907665

**Please ensure you include family name and payment description as reference.**

### **CURRENTLY DUE BACK**

- Yr 7 Secondary School placements
- Division Cross Country permission & payment \$12
- Yr 5/6 Winter Division Sports - Permission and Payment \$2 (Participating students)
- Cultural Performance - All hands on Ukcs \$9
- One Tree Per Child \$3
- BBQ lunch order form

### **School Council meeting**

The next School Council meeting will be held on Tuesday 12th May @ 6pm.

### **Mothers day stall**

Mother's day stall held on Friday the 8th May. Thank you to all that have donated the paper shopping bags, we do not require anymore. Reminder that student's will need to bring money for the stall. Prices range from \$1 to \$10.

## Mother's Day Stall

On the 8<sup>th</sup> of May Parents and Friends are holding the yearly Mothers Day Stall. To make this day successful we are seeking donations. This could include beauty products, chocolates, socks, mugs etc. These items can be dropped off in the main office. Parents and Friends would like to thank the Shepparton East community for their ongoing support.



## From the Principal's Desk

Dear Parents,

Looking forward to welcoming our mums and special persons for the Mother's day pancake breakfast this Friday!

Wishing all our wonderful Shepparton East mums and special persons a very happy Mother's day for Sunday.



### Applications for Year 7 Placement 2027

A reminder to our Year 6 families to please complete and return your 2027 Year 7 Placement Applications forms to the office by this Friday 8th May.

**All students must return a completed form,** even those who will be attending a non-government Secondary School in 2027.



### Book Fair

Our annual Book Fair will be held this term (Monday 1st June to Thursday 4th June). Parents will be able to attend with their child either before school (between 8:30am-8:55am) or after school (between 3:30-3:45pm) to help choose a book to purchase.

If you are unable to attend, your child will still be able to attend and pick out any books they would like and let you know the book and cost via a handwritten wish list.

Payments may be made in cash, by EFT or direct deposit into our



### First Aid in Schools

On Monday 11th and Thursday 12th May all students will participate in the First Aid in Schools Program run by St John Ambulance. This program develops first aid awareness and skills suitable to each year level through an engaging and hands on experience.



### Division Sports

On Friday 22nd May a number of our Year 5 and 6 students will take part in the Division Sports against other local schools. The sports include soccer and t-ball.

Cost is \$2



**SAVE THE DATE**  
**Shepparton East**  
**Primary School is celebrating**  
**150 years**

Open Classrooms: **Friday 16th October 2026**

Celebrations & Ceremony:

**Saturday 17th October**  
**2026**



### Staff Professional Practice Day—students not required

On Friday 5th June all staff will be taking part in a Professional wellbeing development day in trauma informed practices. Students are not required to attend school on this day.

TheirCare will be running on this day to cater for families requiring care.



### Education Week celebrations

To celebrate Education Week, on Monday 18th May each year level will participate in a hands on activity. The theme is "Showcase your school". Families are invited to attend 2.15 pm to 3.15pm to join in with your child's class activity.

### Division cross country

Congratulations to our students who qualified to enter in the division Cross Country against other local schools on Wednesday 27th May:

We wish them the best of luck.



Les Walsh  
**Principal**

### **Annual privacy reminder for our school community**

Our school collects and uses student and parent personal information for standard school functions or where permitted by law, as stated in the [Schools' privacy policy](#) and the [Schools' privacy collection notice](#). Our [Photographing, Filming and Recording Students policy](#), describes how we collect and use photographs, video and recordings of students. The policy also explains when parent consent is required and how it can be provided and withdrawn. We ask parents to also review the guidance we provide on how we use [Google Workspace for Education](#) safely at the school and what parents can do to further protect their child's information. If after reviewing the guidance, you have any questions or concerns regarding your child using Google Workspace for Education, please contact the school. For more information about privacy, refer to: [Schools' privacy policy: information for parents](#). This information is also available in eleven community languages:

### **Child safe**

Shepparton East Primary School is committed to providing an environment where students are safe and feel safe. Ensuring child safety is a shared responsibility, and we expect all members of our school community—staff, parents, carers, and visitors—to speak up and report any concerns relating to child safety and wellbeing. Our child safety framework located at [www.shepeastps.vic.edu.au](http://www.shepeastps.vic.edu.au) demonstrates how we support and maintain child safety and wellbeing at Shepparton East Primary School. It includes our:

- Child Safety and Wellbeing Policy
- Child Safety Reporting and Responding Obligations Procedures, and Child Safety Code of Conduct, which outlines acceptable and unacceptable behaviours for all staff and volunteers at our school.

Our students and families are important partners in providing a child safe environment. These regular newsletter reminders are one of the ways we ensure our school community is aware of:

- our commitment to child safety, and how to provide feedback or raise child safety concerns.

If you have any concerns about child safety at any time, please contact Shepparton East Primary School on 03 5829 2426. Any child safety complaints or concerns are treated seriously. For more information about our school's complaints process, see our Complaints Policy.

We also welcome your ideas on ways we can improve our approach to child safety and wellbeing. If you have any suggestions or comments please contact Shepparton East Primary School on 03 5829 2426 or at [shepparton.east.ps@education.vic.gov.au](mailto:shepparton.east.ps@education.vic.gov.au).

# Prep 2027 Enrolment

2027 Prep enrolments are now open online.

If you currently have a student commencing prep in 2027, please complete the enrolment via the online VicStudents portal using the website address or qr code attached.

A guide is available at the office if required.



**REGISTER HERE**  
<https://students.educationapps.vic.gov.au/s/>

# Understanding Bullying at Shepparton East Primary School



At Shepparton East Primary School, we are continuing to strengthen our shared understanding of student wellbeing, with a particular focus on helping students recognise what bullying is – and what it isn't.

We will be using a simple and effective framework (see attached flow chart) to guide conversations with students. This helps break down behaviours into four key areas: **rude behaviour**, **mean behaviour**, **conflict**, and **bullying**.

It's important to understand that not all hurtful behaviour is bullying. For example:

- **Rude behaviour** may be unintentional and not meant to cause harm
- **Mean behaviour** might happen once or twice, on purpose
- **Conflict** occurs between students of equal power, often during disagreements
- **Bullying**, however, is **deliberate, repeated, and involves a power imbalance**

By teaching students these differences, we are helping them to:

- Better understand their own experiences
- Respond appropriately to different situations
- Seek the right kind of help when needed
- Build stronger, more respectful relationships

We encourage families to have conversations at home using similar language. Asking questions like “Was it on purpose?”, “Has it happened more than once?”, or “Was there a power difference?” can help children think more clearly about their experiences.

Our goal is to ensure all students feel safe, supported, and empowered – and that as a community, we are consistent in how we understand and respond to behaviour.

# am I being bullied?

START HERE!

Was it deliberate/on purpose?

Yes No

Was it personal/targeted?

Yes No

Was it said in anger?

No Yes

Was it part of a fight with a friend?

No Yes

Has it only happened once or twice?

No Yes

Does the person doing it have 'more power' than you? e.g. more popular, older, stronger

Yes No

## bullying

Someone more powerful saying or doing something hurtful to someone on purpose, over and over again

## rude behaviour

Saying or doing something hurtful that wasn't planned or meant to upset someone

## conflict

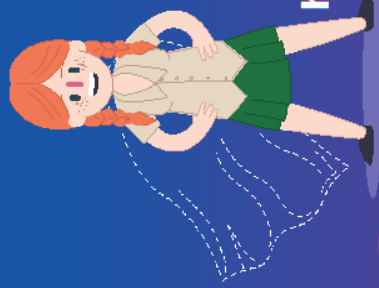
Saying hurtful things on purpose due to heightened emotions as part of a disagreement

## mean

Saying or doing something hurtful to someone on purpose once or twice



scan here to find out more! →



# not all superheroes wear capes!

## how to be an upstander against bullying...

1

### stay calm

Don't react or retaliate - in some situations, this can make bullying worse!



2

### interrupt the bullying



3

### remove the person being bullied from the situation



4

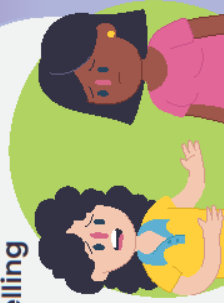
### offer support



5

### tell adults you trust them until the bullying stops

Tell more than one adult and keep telling them until the bullying stops



**kids help line**  
anytime.anyreason.

1800 55 1800

kidshelpline.com.au

# PRINCIPALS AWARD

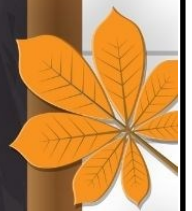


Congratulations—

**EMILY**

for receiving the  
Principals award.

Keep up the awesome  
work!



# PRINCIPALS AWARD

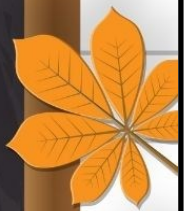


Congratulations-

**CAELIN**

for receiving the  
Principals award.

Keep up the awesome  
work!





# SUPER STAR AWARD



Congratulations to

Japsahib, Letizia & Isabelle

on receiving the Super  
Star award.  
Keep up the amazing  
work!

# SUPER STAR AWARD



Congratulations to

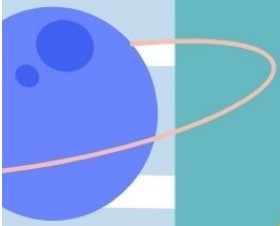
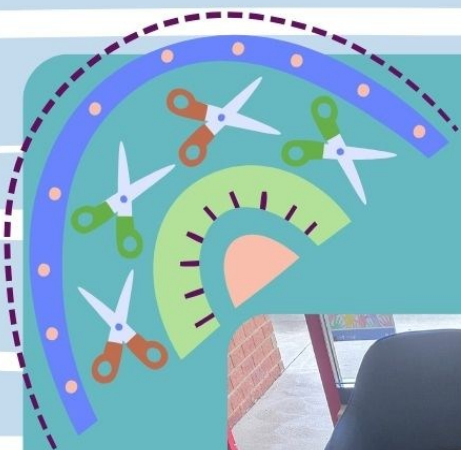
**Audrey & Gilbert**

on receiving the Super  
Star award.  
Keep up the amazing  
work!



**Congratulations to  
*Katara & Ella*  
who cashed in their  
spottos to enjoy a  
special lunch  
together.  
Keep up the great  
work!**

ABC



# ANZAC DAY

SHEPPARTON EAST PRIMARY  
SCHOOL ANZAC SERVICE.  
THANK YOU TO EVERYONE  
WHO ATTENDED AND PAID  
THEIR RESPECTS.



# ANZAC DAY



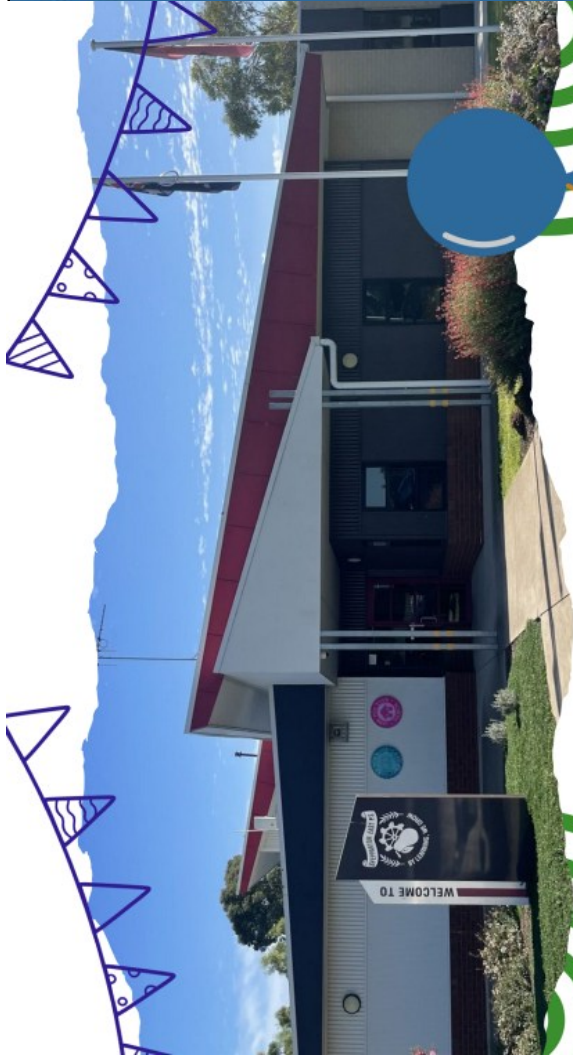
Shepparton East Primary School was proudly represented by our School Captains at the ANZAC Day Service, where they laid a wreath on behalf of our school community.

*Lest we forget*



*Lest we forget*





**SHEPPARTON EAST PRIMARY SCHOOL**



# 150 YEAR Anniversary

Today, we recognise not only the years gone by, but the memories, milestones, and moments that have shaped our community.

**OCT 17** ✦

**10AM - 2PM**

**15 School Road, Shepparton East**

DO YOU HAVE ANY PHOTOS, MEMORABILIA, OR SPECIAL MEMORIES FROM YOUR TIME AT OUR SCHOOL? WE WOULD LOVE TO INCLUDE THEM IN OUR 150-YEAR CELEBRATIONS! PLEASE GET IN TOUCH WITH US TO SHARE.

**CONTACT US:** 58292426  
shepparton.east.ps@education.vic.gov.au

**SHEPPARTON EAST PRIMARY SCHOOL**



**ENROL NOW**

CALL FOR DETAILS  
**58292426**



[www.shepeastps.vic.edu.au](http://www.shepeastps.vic.edu.au)

# TRANSITION DATES



## PREP TRANSITION DATES

- Monday 7<sup>th</sup> September- Student Classroom Visit & Parent Information Session (9.00am-10.30am)
- Friday 12<sup>th</sup> October- Student Classroom Visit (9.00am-10.30am)
- Monday 26<sup>th</sup> October- Specialist & Parent Information Session (9.00am-10.30am)
- Friday 20<sup>th</sup> November- Student Classroom Visit (9.00am-10.30am)
- Tuesday 8<sup>th</sup> December- Transition Day (9.00am-11.30am)



We warmly invite your child to begin their school journey at Shepparton East Primary School through our Prep Transition Program, designed to build confidence and excitement for starting Prep in 2027.



Shepparton East Primary School



@sheppartoneastps

**FIND US ON...**



# BBQ



Parents and Friends will be offering a BBQ Wednesday 3rd June.

All proceeds will be going to Parents and Friends to go directly back into the school for various projects. We would like all orders to the office no later than 3.30pm on Tuesday 2nd June 2026. Please return the below slip to the office with payment. (Cash, Eftpos or Bank Transfer)

Cost is \$2.50 for a sausage in bread, \$1.50 for Apple Juice, \$1.50 Cookie.

Or grab a lunch pack consisting of a Sausage, Apple Juice and Cookie for \$5.



Family Name: \_\_\_\_\_

Student: \_\_\_\_\_ Class: \_\_\_\_\_

Dietary requirements: \_\_\_\_\_

Lunch Pack \$5  Apple Juice \$1.50  Cookie \$1.50  Additional Sausages # \$2.50  Sauce   
(Snag, Juice, Cookie) (Only) (Only)

Student: \_\_\_\_\_ Class: \_\_\_\_\_

Dietary requirements: \_\_\_\_\_

Lunch Pack \$5  Apple Juice \$1.50  Cookie \$1.50  Additional Sausages # \$2.50  Sauce   
(Snag, Juice, Cookie) (Only) (Only)

Student: \_\_\_\_\_ Class: \_\_\_\_\_

Dietary requirements: \_\_\_\_\_

Lunch Pack \$5  Apple Juice \$1.50  Cookie \$1.50  Additional Sausages # \$2.50  Sauce   
(Snag, Juice, Cookie) (Only) (Only)

Student: \_\_\_\_\_ Class: \_\_\_\_\_

Dietary requirements: \_\_\_\_\_

Lunch Pack \$5  Apple Juice \$1.50  Cookie \$1.50  Additional Sausages # \$2.50  Sauce   
(Snag, Juice, Cookie) (Only) (Only)

TOTAL : \$ \_\_\_\_\_

## LEARNING SUPER STARS & CELEBRATE LEARNING TERM 2 2026

Assembly Date	Learning Super Star	Celebrate Learning
<b>Week 1</b>	Grade P/1/2 Team (Leyla/Livinia/Amy)	PG
<b>Week 2</b>	Grade 3/4 Team (Deanne/Jayde)	1/2S
<b>Week 3</b>	Grade 5/6 Team (Arlene/Ella/Nick)	3/4B
<b>Week 4</b>	Grade P/1/2 Team (Leyla/Livinia/Amy)	5/6B
<b>Week 5</b>		
<b>Week 6</b>	Grade 3/4 Team (Deanne/Jayde)	1/2J
<b>Week 7</b>		
<b>Week 8</b>	Grade 5/6 Team (Arlene/Ella/Nick)	3/4T
<b>Week 9</b>	Grade P/1/2 Team (Leyla/Livinia/Amy)	5/6A
<b>Week 10</b>	Grade 3/4 Team (Deanne/Jayde)	5/6I

**THIS IS THE SCHEDULE FOR THE LEARNING SUPER STARS AND CELEBRATE LEARNING FOR TERM 2 ASSEMBLY. THESE ARE SUBJECT TO CHANGE AT ANY TIME.**

# GRADE 6 TRANSITION TO GSSC TIMELINE

Any queries please contact Belinda Petty on 5891 2000 or [transition@gssc.vic.edu.au](mailto:transition@gssc.vic.edu.au)

### Placement Information Pack

Received at the start of Term 2 (around **22 April**).  
Choose your preferred secondary school and return the form to your Primary School by **8 May**.

### GSSC Information Night

Wednesday **29 April**. Tours at 4:00pm, followed by an Information Session at 5:00pm.  
A great chance to learn more about the school and its opportunities.

**School Tours** Tours are available on **Tuesday** mornings, as well as at various times during the first two weeks of **Term 2**. Bookings can be made via the GSSC website.  
<https://www.gssc.vic.edu.au/event-registration-form> or QR Code.



**Placement Notification** will be received from your Primary School advising of the secondary school offer. To secure your place at GSSC, this must be accepted and returned to the Primary School by **11 August**.

### Second GSSC Information Evening - August (date to be confirmed)

Collect enrolment packs, learn about bus travel and transition, and join a school tour before the session.

**High Ability Program** (optional) students will need to register interest from **13 July to 7 August** and attend a testing session to enable entry into this program. Instructions will be available via your Primary School closer to the date.

**Additional Transition** opportunities will be offered later in the year once placements are finalised. Including sessions focused on Wellbeing, Diverse Learners, First Nations, English as an Additional Language and Taster sessions.

**Orientation Day – December 8** all students coming to GSSC in 2027 will be able to experience a day at high school with plenty of fun activities and learning experiences.





# AUTUMN FUTSAL

SHEPPARTON JUNIOR & SENIOR COMPETITION



### PROGRAM INFORMATION

Prepare to ignite your passion for Futsal in the Bendigo Summer Futsal Competition. Our venues come alive with, action-packed matches, showcasing the talents of young athletes on the court! Come along, soak up the atmosphere, and cheer on your champions from the stands!

### AUTUMN SEASON DETAILS

**DAY:** Monday

**TIME:** 4pm - 6:30pm (Juniors) 6:30pm - onwards (Seniors)

**AGE GROUPS:** Under 6/8/10/12/14/16/Senior Mixed

**DATES:** April 20 - June 22

**SEASON COST:** \$140

**SEASON STRUCTURE:** 8 x week season + 1 week of finals

**VENUES:** Guthrie Street Primary School Stadium

- **WEEKLY MATCHES**
- **REGISTER AS A TEAM**
- **REGISTER INDIVIDUALLY**



**SIGN UP & RECEIVE A 30% OFF NEW BALANCE DISCOUNT CODE!**

BOOK ONLINE NOW AT [KELLYSPORTS.COM.AU](http://KELLYSPORTS.COM.AU)

0476 720 270

[shanec@kellysports.com.au](mailto:shanec@kellysports.com.au)

1 St Vincent's Rd, Junortoun Vic, 3551

[www.kellysports.com.au/bendigo](http://www.kellysports.com.au/bendigo)



## WE NEED A COUPLE OF PLAYERS!

### JOIN OUR

# SNA 9/U NETBALL TEAM!

BORN IN 2017 OR 2018?

GIRLS & BOYS WELCOME!



### FUN • FRIENDLY • CONFIDENCE BUILDING!

TRAINING THURSDAY NIGHTS

CONGUPNA | 4:30 - 5:30 PM



### COME AND GIVE NETBALL A GO!

FOR MORE INFORMATION PLEASE CONTACT **BIANCA COOK** ON 0409 959 399



## 2026 Junior Badminton Season



Get Ready for an Exciting Season Ahead!

Dear Badminton Enthusiasts,

We are thrilled to announce the commencement of the new badminton season! As we are preparing to embark on another exciting journey of matches, training sessions, and friendly competitions, we want to share some important information to ensure that everyone is ready and informed.

### Season Start Date

The upcoming season competition will officially begin on 24<sup>th</sup> of April following the first term school holidays. Please mark your calendars and make sure to attend the opening ceremony, where we will outline key dates and events for the season.

### Training Sessions

Two free come and try/training sessions are available on Fridays the 20<sup>th</sup> and 27<sup>th</sup> of March, 4.00 PM to 6.00 PM at the Shepparton Sports Stadium. Assistance for beginners will be available.

### Registration

Registration for the new season is open now. Please visit our website to complete the registration process. Early registration is encouraged to secure your spot and avoid any last-minute rush.

PLAY FOOTBALL GAMES WITH FRIENDS

LEARN NEW SKILLS



# ANYBUDDY CAN PLAY

[PLAY.AFL/SUPERKICK](http://PLAY.AFL/SUPERKICK)

## Shepparton All Girls Superkick Program

Commencing: Sunday's 17th May (8weeks)

Time: 9:00am - 10:00am

Location: Princess Park

Ages: 7-12yrs Old

Register Here:



**SHEPPARTON TENNIS ACADEMY**

# TENNIS LESSON

Head Coach Ben O'Brien. A Tennis Australia Accredited Club Professional Coach @ Shepparton Lawn Tennis Club

## NEW BEGINNER PROGRAMS SHEPPARTON TENNIS ACADEMY

**KIDS BEGINNER LESSONS**

**ADULT GROUP & CARDIO MATCH PLAY**

**PRIVATE LESSONS**

**HIGH PERFORMANCE PROGRAMS**



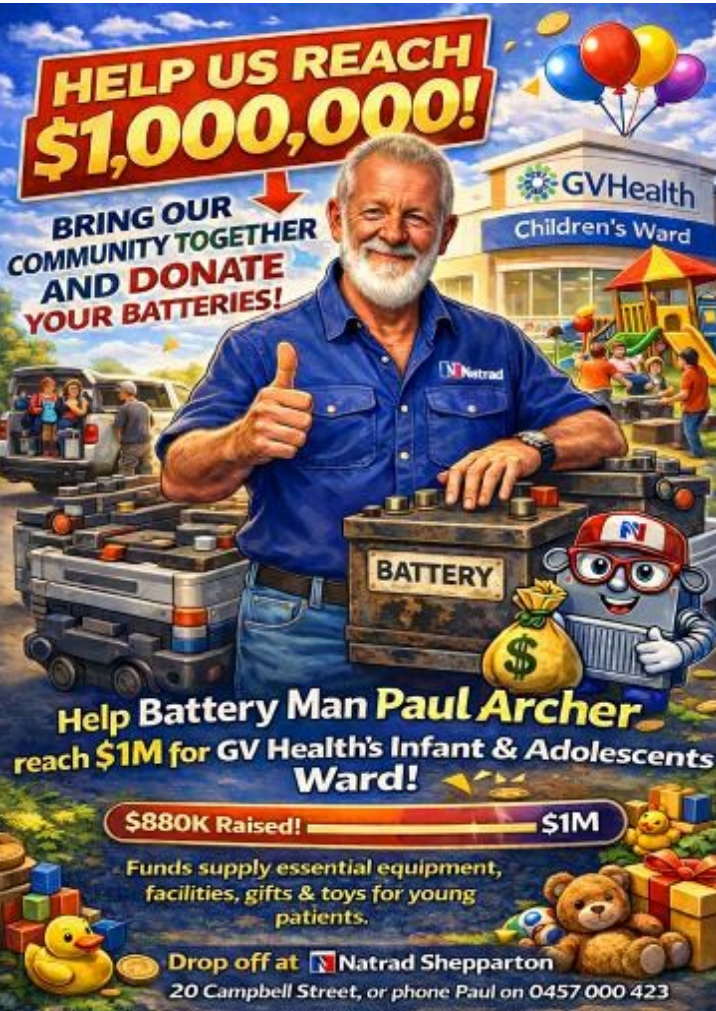

**SPOTS REMAINING ON MONDAY - TUESDAY & THURSDAY**

AGES 5-7 @ 4PM  
AGES 8-9 @ 4.30PM  
AGES 10-12 @ 5.15PM  
AGES 12-15 MONDAY 5.15PM

FIND OUT MORE AT  
[WWW.SHEPPARTONTENNISACADEMY.COM.AU](http://WWW.SHEPPARTONTENNISACADEMY.COM.AU)  
OR CALL BEN 0439 069 043

# HELP US REACH \$1,000,000!

**BRING OUR COMMUNITY TOGETHER AND DONATE YOUR BATTERIES!**



**Help Battery Man Paul Archer reach \$1M for GV Health's Infant & Adolescents Ward!**

**\$880K Raised! ————— \$1M**

Funds supply essential equipment, facilities, gifts & toys for young patients.

Drop off at **Natrad Shepparton**  
20 Campbell Street, or phone Paul on 0457 000 423



**TheirCare**  
Where Kids love to be!

**Shepparton East Primary School**

Social, enjoyable & fun experiences for children

Develop creativity, life skills & confidence through play

Qualified, caring & engaged staff

Exciting & thoughtfully developed programs

Healthy & Yummy food provided each day

👉 Bookings now open! 👈

	Monday - Friday Hours of Operation	Fees before Child Care Subsidy*	Out-of-pocket fees after Child Care Subsidy**
Before School Care (BSC)	7:00 AM to 8:45 AM	\$19.27	\$1.97
After School Care (ASC)	3:30 PM to 6:00 PM	\$27.99	\$3.74
Pupil Free Day	7:00 AM to 6:00 PM	\$71.16	\$7.12
Holiday Program***	7:00 AM to 6:00 PM	\$71.16	\$7.12

\*Standard fee code before Child Care Subsidy. \*\*Out-of-pocket fee code after Child Care Subsidy. \*\*\*Standard fee code for holiday program.

**Cancellation Fees**  
New enrollees: BSC/ASC within 24 hours of session start time: \$4.00  
Holiday Program: within 5 days of session start time: \$10.00  
Same day cancellation fee is out-of-pocket session fee.

**Late Booking Fees**  
New enrollees: BSC/ASC within 1-24 hours of session start time: \$4.00  
Holiday Program: book less than 5 days from the session start time fee is \$10.00

**Late Pick-up Fees**  
\$1 per minute after 15:00 or 18:00 time.

**Service Phone Number:**  
0457 355 878

Your service coordinator will be available during session times.

**Save up to 90% With the Child Care Subsidy!**



**To register visit [theircare.com.au](http://theircare.com.au)**

## Permanent Care

Could you provide a long term, caring and nurturing home for a child?

### What is Permanent Care?

Permanent care provides a child with security, stability and life-long relationships in the care of a family when they are unable to live at home.

Permanent care arrangements allow for children to grow up in a loving and nurturing environment with adults who are committed to promoting their development so they can reach their full potential.

Children are usually aged up to 10 years when they move to their permanent care family with efforts made to ensure siblings are kept together. A permanent care order granted by the Children's Court transfers custody and guardianship to the permanent carer.

### What is a Permanent Carer?


We are seeking committed and motivated people who can provide a stable, secure and nurturing environment for a child. Permanent carers need to have the time, commitment, understanding and love to help a child gain trust and to feel secure within their permanent care family.

### What support does a Permanent Carer receive?

Support is provided to permanent care children and families, including a level of financial assistance towards the day-to-day expenses of caring for a child/ young person.

### Want to find out more?

If you are interested in learning more about becoming a permanent carer and providing a home for a child, you are welcome to attend an information session:



**Session 1 (in person):**  
Tuesday 24<sup>th</sup> March 2026  
5:30pm-6:30pm  
Venue details provided upon registration

OR

**Session 2 (online):**  
Wednesday 29<sup>th</sup> April 2026  
6:00pm-7:00pm **online**  
Login details provided upon registration

You can register your interest to attend one of these sessions by contacting the Permanent Care Program:  
Email: [apceastem@dhs.vic.gov.au](mailto:apceastem@dhs.vic.gov.au)

For further information please visit our webpage [Permanent care - DFH Services](https://services.dhm.vic.gov.au/permanent-care)  
<https://services.dhm.vic.gov.au/permanent-care>

**OFFICIAL**  
VICTORIA State Government Families, Fairness and Focus 10

TheirCare support team is available between 6.30am - 9pm weekdays (Eastern Standard Time) on 1300 072 410 or [info@theircare.com.au](mailto:info@theircare.com.au)